



Hamax ID: 11115, Rev. 000, User manual Outback Skiing Kit

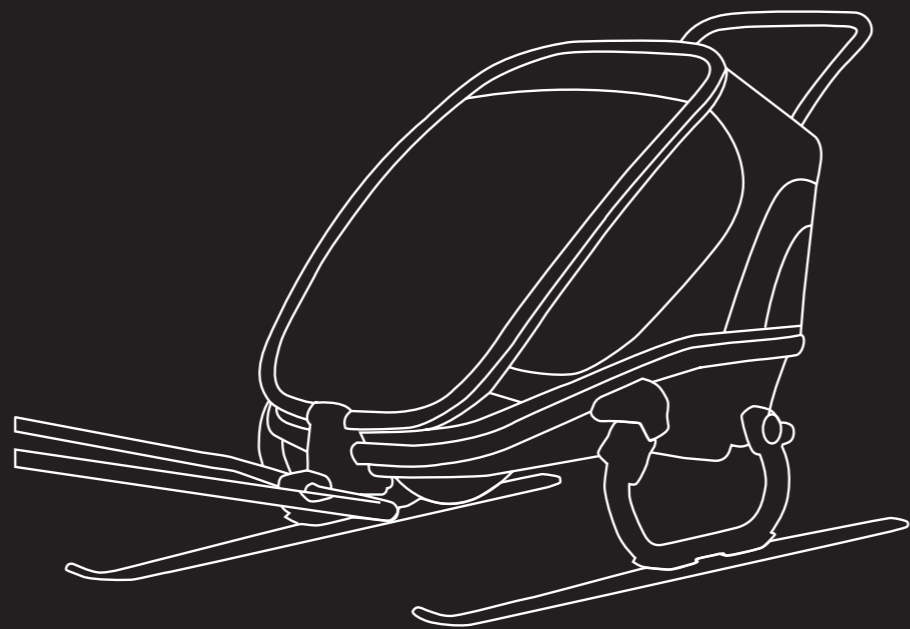
Hamax AS
 Vålerveien 159
 N-1599 Moss
 Norway
 Tel.: +47 69 23 38 38
 email: customerservice@hamax.no
 www.hamax.com

User Manual



HAMAX OUTBACK / OUTBACK ONE Skiing Kit

(add line drawing of harness)



CONTENTS

- EN - English
- NO - Norsk
- SE - Svenska
- DA - Dansk
- FI - Suomalainen
- DE - Deutsch
- FR - Français
- ES - Español
- PL - Polski

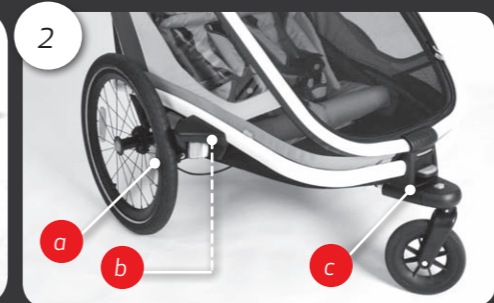
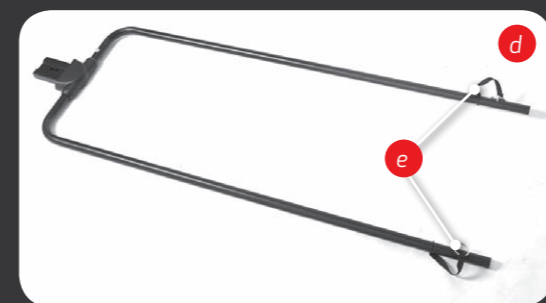
1

a

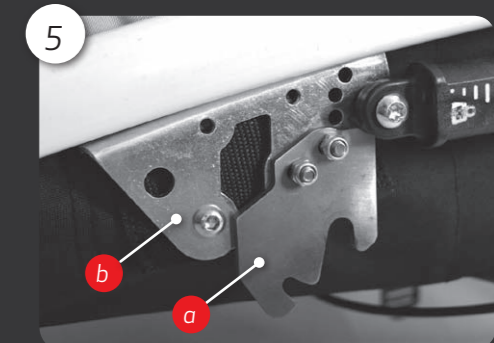
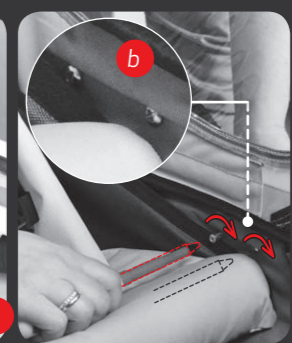
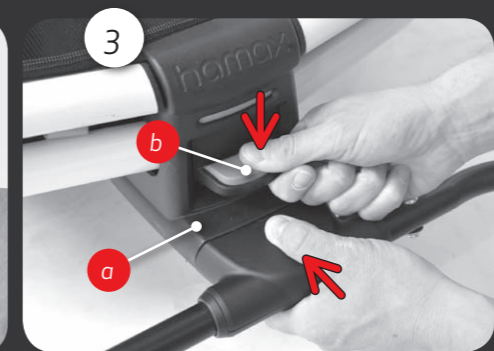


b

c



3



EN Thank you for choosing the Hamax Outback Skiing kit

Congratulations on purchasing the Hamax Outback Skiing Kit. You can transport your child in a safe and comfortable way when cross country skiing using the Hamax Outback. Please read the instructions carefully before assembling or using the Hamax Outback Skiing Kit. We wish you and your children many enjoyable trips!

Keep these instructions in a safe place for later use.

We recommend that you register your bicycle trailer. Please register here:
<http://www.hamax.com/product-registration>

SPECIFICATIONS

- See the specifications in image [A]
- Weight trailer (fully assembled trailer incl. bicycle arm): 20kg (Outback) / 17kg (Outback One)

A



Towing speed
 Advised speed: 16km/h / 10mph
 Max speed: 24km/h / 15mph




Tow bar load
 Do not attach extra weight to the tow bars




Physical requirements
 Min age: 6 months
 Max child height: 117cm / 3.83ft

OUTBACK




Weight capacity
 Max load: 40kg / 88lb
 Max weight child: 22kg / 48,5lb
 Max weight incl. trailer: 60kg / 132lb



Seating positions
 For 1 or 2 children

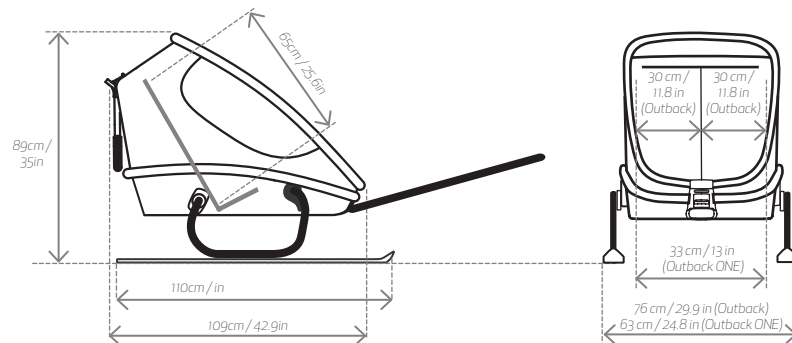
OUTBACK ONE



Weight capacity
 Max load: 34 kg / 75 lb
 Max weight child: 22 kg / 48,5 lb
 Max weight incl. trailer: 51 kg / 112 lb



Seating positions
 For 1 child



SAFETY GUIDELINES

! WARNINGS

- **Important** – Keep these instructions for future reference
- This product complies to the European and American standards for child bicycle trailers and strollers (EN 15918, EN 1888, ASTM F1975 and ASTM F833).
- **FALL HAZARD** from tip over.
- Using the ski trailer requires skill, practice before taking on passengers.
- This product is not suitable for downhill skiing or skating. Do not use the ski trailer as a sledge.
- This seat unit is not suitable for children under 6 months.
- This seat unit is not suitable for children that can not sit without assistance or do not have adequate neck strength. Please check with a pediatrician if you are in doubt.
- Do not use with children who exceed the weight limitations.
- Never leave your child unattended. Do not let your child play with this product unsupervised.
- Avoid serious injury from falling or sliding out. Always use the restraint system.
- Occupants should always wear a properly fitted and approved helmet.
- Do not install a car seat or any other seating device not approved by the manufacturer inside the trailer.
- Make no modifications to the trailer, skis or tow bars.
- A reflector that complies with CPSC regulations (US) shall be visible on the rear of the trailer.
- Failure to comply with the manufacturer's instructions can lead to serious injury or death of the passenger/rider.
- Close the front cover when using the bicycle trailer.
- Do not store luggage in areas inside or outside the trailer other than in the luggage compartment as it affects the stability of the trailer.
- Do not attach extra load to the tow bars.
- Always park the ski trailer on flat surface, it has no parking brake.
- Regularly check that passengers are comfortable and warm enough.
- Watch out for finger entrapment when fitting the skis on the trailer.
- Before each trip, ensure that all locking devices are engaged and check overall stability.
- Skiing with a trailer that is not in good order can cause accidents and serious injury to the skier, the passengers or others on the trail.
- Be aware of the extra weight when braking. Bear in mind that high speed and hard, icy surfaces impair steering and braking ability.
- Respect other skiers, as you are slower and bigger with the trailer behind you.
- The trailer may not necessarily follow your skiing line at all time, especially when changing direction at higher speeds.
- Do not modify the ski set, if needed contact Hamax for replacements.
- Store away the push bar and make sure that the passengers have no loose, hanging scarves/ clothes which can attach to passing obstacles.
- Unintended use could lead to dangerous situations. Hamax is not liable for any damages caused by unintended use. Any unintended use is at the risk of the user.

Important instructions

This manual is an addition to the manual for the Hamax Outback trailer and provides instructions that are important for the safety of the skier and passengers when using the Hamax skiing kit for Outback. If you lend or sell your skiing kit, please pass on this instruction manual to the new user. A digital copy is available for download on: www.hamax.com

Cross country skiing with Outback

Skiing with the Outback is different from ordinary cross country skiing. We advise to practice skiing without passengers but with a similar load in the trailer before transporting children. Take your first trip on a familiar route.

The Outback Skiing Kit is designed for cross country skiing only. Using it on steep slopes, either going down or upwards, is dangerous even for experienced skiers. Be careful on icy slopes as the trailer will have less traction. Skiing over surfaces with little snow will reduce mobility and damage the skis.

Always be sure to park the trailer on a flat area as there is no parking brake on the skiing kit. Do not use the trailer as a sledge or in combination with a motorized vehicle.

Passenger safety

Never leave children unattended in the trailer. Regularly check the passengers to make sure that they are comfortable with the temperature and ventilation in the trailer. While the skier may feel hot from the exercise, the children sitting still in the trailer may feel cold. Also, provide the children with protection against sunburn, as the windows in the trailer offer minimal shielding.

To prevent discomfort or injury in the event of an accident, children riding in the Outback must be secured with the seat harnesses at all time. Before setting out, check that the skis and the ski legs are correctly fitted on the trailer. Inspect the tow bar connections to the harness and the trailer. Do not use the trailer if any part is broken, ripped or has a crack.

Intended use

The trailer is intended for transportation of children as specified in this manual on snow-covered cross country trails. Hamax considers using the trailer in any other way as unintended use, including but not limited to:

- skiing with excessive speed
- using it as a sledge or skiing on steep slopes
- using the trailer for commercial purposes
- transporting animals
- storing luggage in areas inside or outside the trailer other than in the trailer's luggage compartment
- towing the trailer by motorized vehicles
- failing to comply with the instructions in this manual

GETTING STARTED - INSTALLATION

[1] Packaging content & required tools

- Right ski leg
- Left ski leg
- Skier harness
- Central Tow bar (d)
- Tow bar pins (e)
- Tow bar skier side (2x)
- Socket plate, left and right (5a)
- Neck bolt M6 * 16 (4x)
- Washer M6 (4x)
- Torque nut M6 (4x)
- User manual

[3] Mounting the tow bars

- To connect the Central tow bar, make sure the slider (2d) is upwards. Slide the Central tow bar into the opening of the front connection (2c) until it locks into place.
- Move the slider downwards until it snaps into place. The green color indicates that the connection point is locked. Verify that the slider is locked by pulling it upwards.
- Insert the thin section of the Skier tow bar into the bigger tube of the Central tow bar. Align the holes in the tubes and fix the connection with the attached pin (3c).

[4-7] Mounting the Ski legs to the trailer

After attaching the skis, the trailer can slide. Always assemble on a flat surface.

- Remove the Wing (4a) by unscrewing the 2 screws on the inside of the trailer (4b). Reattach the Wing at the end.
- Attach the Socket plate (5a) to the Wing plate (5b) using the M6 bolts, washer and nuts from the package. Be sure to attach them tightly and to have the plates on the correct side.
- Make the rear connection (6) by inserting the Ski leg axle into the Socket of the trailer in the same way as a wheel.

- To make the front connection, rotate the Ski leg until it hooks the front connection in the Socket plate under the Wing. If it does not fit, check if the Socket plate is mounted correctly.
- To unmount, first use the grey handle on the Ski leg to unhook the front connection (6) and then push the button to release the axle connection (7).

SKIER HARNESS

The Skier harness has belts to go around the waist and over the shoulders. It has straps (a) and Velcro section (b) at the waist that can be adjusted the harness to fit the skier. Preferences on tightness vary between skiers, but always use both shoulders and buckle the waist belt. Once the Ski harness has the right fit, the extra strap length can be stored using the elastic bands.

(photos)

The Tow bars connect to the Skier harness with a strap on the waist belt. Hold the Buckle sideways and stick it through the Tow bar ring to hook it. The length of the straps gives the skier room to move or to turn around. Pull the straps (c) at the front of the waist belt to adjust the tightness of the connection. Practice before you go on a trip.

To disconnect the Tow bars, loosen the strap and pull the Buckle sideways back through the ring.

CARE AND MAINTENANCE

Check before using the trailer

- The ski legs are properly secured to the trailer.
- The skis are undamaged and properly attached to the frame.
- The trailer is unfolded properly and the mechanism is locked on both sides. Do not forget to lock the push bar.
- The seat back rest is well secured and tightened. Please see the maintenance section.
- The safety flag and lights are in place whenever required.

Storage

- It is highly recommended to store the Skiing Kit indoors, in a dry and well-ventilated area out of direct sunlight.

WARRANTY

The Hamax Outback Multifunctional Child Carrier and Outback Skiing Kit are warranted from the date of purchase. The warranty period depends on the law of the country in question. The warranty applies to defects in materials or workmanship, and does not cover damage due to improper use, lack of maintenance, failure to follow the user manual, use of force or normal wear and tear. The warranty is valid for the original user only. Please read the use and maintenance recommendations carefully. Conditions that may cause premature wear of the carrier may not be covered by the warranty. Should the carrier require service or you want to make a warranty claim, please contact your local dealer from whom you purchased your carrier.